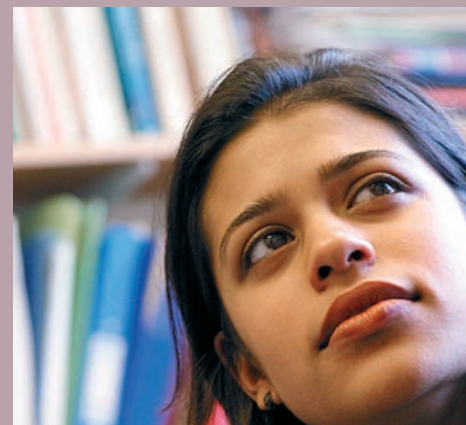


Speech and Language Difficulties

PGCert, PGDip, MEd
Distance Education

Is this programme for you?

This programme is for teachers, speech and language therapists and other professionals working with children and young people with speech, language and communication needs.



What does the programme offer?

Modules

1 Language in Development

The first module provides students with an introduction to the nature of language and its development in children and adolescents.

The topic of literacy is also discussed. This module provides a necessary foundation for upcoming modules.

2 Speech and Language Difficulties

The second module explores various aspects of language including phonology, semantics, grammar and pragmatics in relation to speech and language difficulties. These difficulties are presented through a variety of models including medical, linguistic, psycholinguistic and educational/ social models.

Particular attention is paid to the assessment of speech and language difficulties.

3 Managing the Curriculum for Speech and Language Difficulties

The third module focuses on how language can be assessed in the classroom and how management plans can be developed in ways suitable for children with speech and language difficulties.

Attention is given to the learning environment, the activity of learning, the role of the teacher in collaborative curriculum planning.

4 Provisions and practices for speech, language and communication needs

The fourth module develops students' knowledge of management and organisational learning of multi-agency provision and work with families.

There is a focus on multi-practitioner work in inclusive classroom practice, and children's and clients' voice.

5 Further Studies in Language Difficulties

The fifth module offers students a selection of topics related to speech and language needs to choose from for a partly self-directed study. Topics include: alternative and augmentative communication, autism, social, emotional and behavioural difficulties, secondary-aged learners, bilingualism, phonology and literacy.

6 Special Studies in Special Education and Educational Psychology

This module is a self-directed study of an aspect of the programme (20 or 40 credits).

It is an opportunity for students to explore a topic related to the programme and of interest to them. It may be a review of literature on the topic or a practice-based study using research methods covered in the programme, such as case study and action research.

How do you study?

The programme is primarily delivered through distance education, students will learn at their own pace and in their own homes and workplaces. Study is supported through study packs, online materials, discussions and interaction, and through an allocated tutor in a small tutorial group which allows students contact. There is University based residential at the beginning of the academic year.

What are the entry requirements?

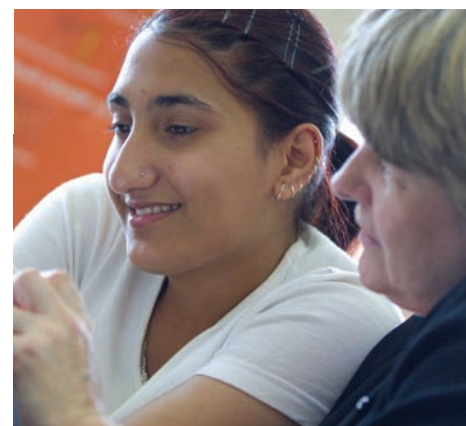
Students must be working with children/young people with speech, language and communication needs in an educational setting.

How do you apply?

If you require an application form please contact the School of Education on 0121 414 4866 or at education@bham.ac.uk giving your name and address. An early application is advised as places are allocated on a first come first served basis.

Learn more

Dr Jodi Tommerdahl Tel No 0121 414 4456
Email: j.tommerdahl@bham.ac.uk or
Deirdre Martin Tel No 0121 414 4849
Email: d.m.martin@bham.ac.uk



Study and Awards	
PGCert	Modules 1–3
PGDip	Modules 1–6
MA	Modules 1–5 plus research methods module and dissertation